

お客様各位

Ref: FESN-2208  
2022年9月末日  
富士電機株式会社

**富士電機 船舶用排ガス浄化システム(EGCS)  
水質計pH センサ取付け方法の御案内**

拝啓 貴社益々ご清栄のこととお慶び申し上げます。平素より、船舶用排ガス浄化システム(EGCS)をご愛顧賜り、厚く御礼申し上げます。

チェルシー製水質計 pH センサの取付けの際に強く締めすぎるとフローチャンバーに亀裂が発生する可能性があります。

つきましては、納入しております図書名「Sea Sentry Handbook (Doc No. 2374-100-HB | Issue M)」に記載のある取付方法参照し、適切に取付けて頂く様よろしくお願い致します。次ページに抜粋を載せます。

**事例(フローチャンバー亀裂)**



## pH センサ取付け方法 (Sea Sentry Handbook 《Doc No. 2374-100-HB | Issue M》抜粋)



The pH sensor electrode will be damaged if allowed to dry out in air for more than 30 minutes. Fill the system promptly after installing the sensor.

Follow the instructions in Table 5 to fit the pH sensor to the cabinet.



1. Remove the pH sensor from the packing box.



2. Unscrew the cap from the end of the sensor. Caution: hold the sensor vertically as the cap will be filled with 10ml of pH7 solution to protect the electrode during shipping.



3. If necessary, remove the old PTFE tape, then re-apply approx. 5 turns of new PTFE tape to the taper thread region of the sensor.



4. Screw the pH sensor into its flow chamber. Important: the probe must not be over-tightened, use a 26mm A/F spanner to tighten to 7 – 3mm limit from the hex shoulder (see Figure 17 and caution statement).

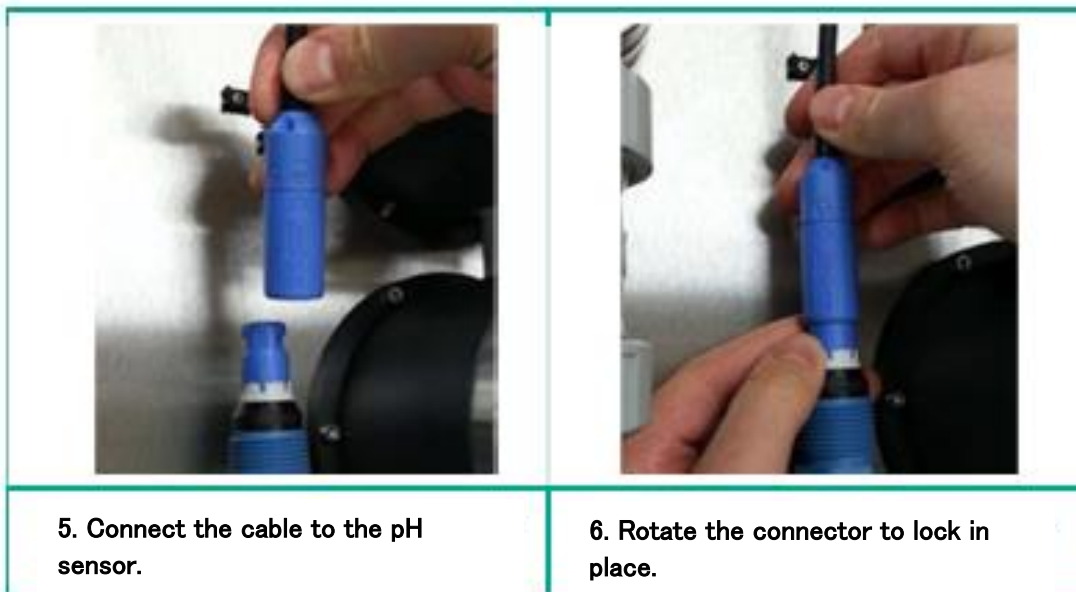


Table 5: Fitting the pH sensor.

After fitting the pH sensor, the system must be filled promptly (within 30 minutes) in order to prevent the pH sensor electrode from drying out and being damaged.

Ensure the drain valve is in position 'A' (Table 3) and the vent plug is closed (Figure 3).

Open the flow outlet isolation valve VV4, followed by the inlet isolation valve VV1 (Figure 1).

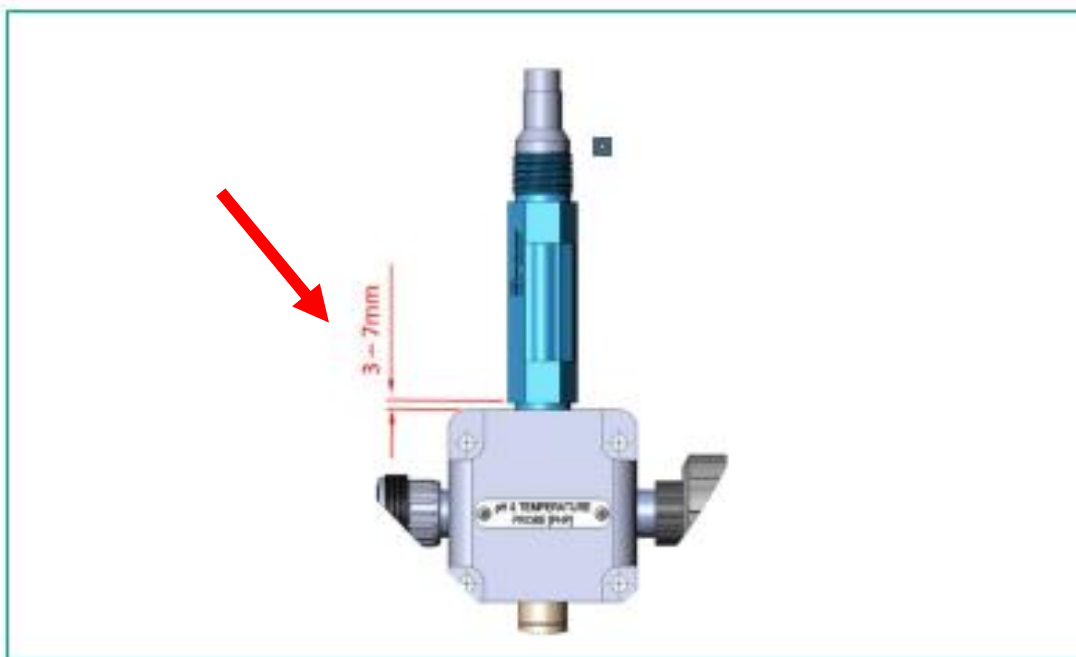



Figure 17: Tightening the pH sensor into the flow chamber.

	<p>The pH sensor is sealed into the flow-chamber using a taper thread. Extreme care should be taken not to over-tighten the pH sensor to avoid cracking the flow-chamber. If in doubt tighten loosely, test for leaks, then tighten fractionally more if required.</p>
---	--